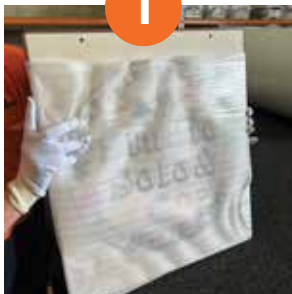


Swing A-Frame Assembly

1



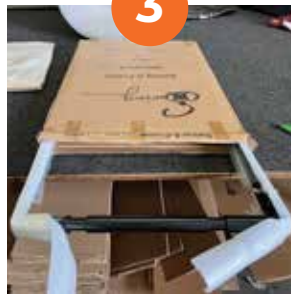
After completing QA of printed image for sign, neatly wrap the ACM/wood panel using packing foam (available from Office Works)

2



Lay the swing frame on a flat surface and slide the top part of the frame out. Check that the swing hinge is away from you. This will ensure you have the front of the frame facing up.

3



Carefully separate the top piece of packing foam and any plastic wrapping to expose the top bar of the frame.

4



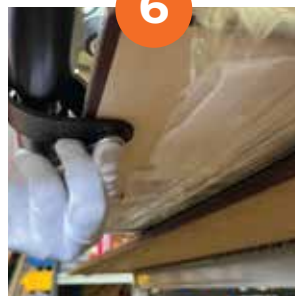
Place a leather strap in the allocated groove on the top of the frame and position the printed sign in location, ready to attach.

5



Insert your button screw and washer through the allocated hole on the strap and sign and attach nut to the underside. Repeat for both straps.

6



Using drill and wrench, tighten nuts to complete the sign.

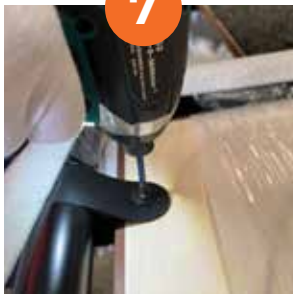


STAR
outdoor

call us on 1300 721 877
visit us at staroutdoor.com.au

Swing A-Frame Assembly

7

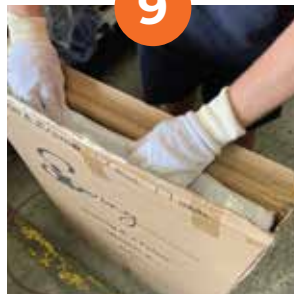


8



Carefully re-tape the protective foam at the top of the frame, ensuring no tape gets on the frame itself

9



Insert completed sign back into box and tape